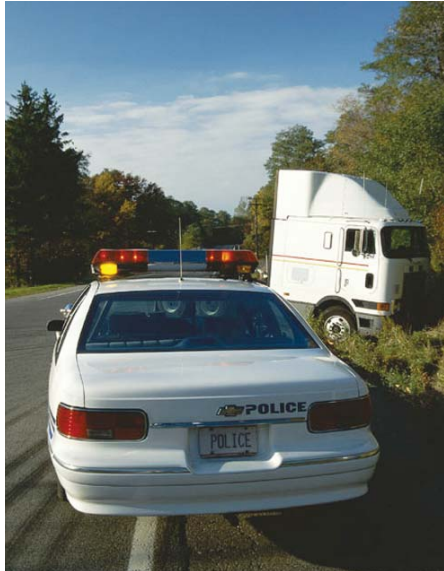




Taking GPS to the Streets

The State of Kentucky Maintains Safe Highways with Magellan Handheld GPS Receivers from Thales Navigation

“Accurate traffic crash locations are essential to the Kentucky Transportation Cabinet in planning and implementing roadway improvements to enhance overall safety and service on the state maintained road system,” said Greg Witt, Assistant Director for the Cabinet’s Division of Planning. Today Kentucky law enforcement officials pinpoint these locations with the aid of Magellan GPS.



“Proper crash site location is imperative for addressing highway safety,” Witt explained. “Based on this critical information, the Cabinet may authorize highway improvements or increase public safety education, and law enforcement agencies may increase enforcement. Unreliable crash locations hinder the Cabinet’s staff in assessing crash data, especially when using an automated approach, such as a geographic information system (GIS).”

The Kentucky Transportation Cabinet is a state agency that includes the Department of Highways, and it maintains more than 27,000 miles of roads that carry about 85 percent of all traffic in the state. “Safety is a very important priority of the Transportation Cabinet,” said James Codell, Kentucky Transportation Cabinet Secretary. “We want Kentucky’s highways to be safe for those who travel in Kentucky and the state employees who make travel possible.”

“There are various problems inherent with locating by county, route and mile point, including a lack of accuracy,” Witt continued. “In addition, there is a potential for changes to the reference system --

To support this worthy objective, the Kentucky Transportation Cabinet has armed state law enforcement with more than 6,000 handheld Magellan GPS receivers.

while GPS coordinates never change. GPS is a more accurate and practical option for locating vehicular crashes.”

MAGELLAN GPS DELIVERS AFFORDABILITY, DURABILITY AND SUPPORT

To provide the law enforcement community with the most suitable GPS unit, the Kentucky Transportation Cabinet needed a rugged, weather-resistant construction that could operate on two batteries to minimize battery replacement costs. They required a reporting precision of less than 3 meters; automatic positional averaging capability; and easy incorporation of the GPS coordinates into the state’s CRASH reports and database. Also, user-friendly initialization -- including built-in simulation to facilitate training and startup -- was very important.

“Thales Navigation’s Magellan GPS offered us fast delivery, affordability, durability, reliability – everything we needed for this vital public service function.” Greg Witt - Assistant Director, Kentucky Transportation Cabinet Division of Planning

GPS products that met these criteria were evaluated on price, technical support, and quick delivery of more than 6,000 units. The Kentucky Transportation Cabinet chose the Magellan GPS receiver due to its durability, economical price, and the excellent tech support provided by Thales Navigation.

TRAFFIC SAFETY DEMANDS GPS ACCURACY

The Transportation Cabinet depends on law enforcement officers to complete traffic collision reports and provide correct locations of the accidents for further investigation. Traditionally, traffic collisions had been located by county, route and milepost marker.

“Considering the number of units requested, Thales Navigation’s delivery time was superb,” Witt said. “The quick delivery enabled us to distribute and implement in a few short months, which resulted in more accurate crash site locations right away.”

The Magellan GPS is an affordable and easy-to-use pocket-sized unit enabling navigation of over 15,000 cities worldwide and up to 500 user-entered locations. Nine easy-to-follow graphic navigation screens show bearing, heading, distance, speed and more on a high-resolution backlit display. The Magellan GPS offers PC upload/download capability and a powerful 12 parallel-channel receiver for superior tracking performance. Durable and weatherproof, with up to 15 hours of battery life on two AA batteries and an internal 10-year lithium battery backup, Magellan GPS is the ideal GPS solution for Kentucky police who spend long hours on the road in all weather conditions.

MAGELLAN GPS MEETS EXPECTATIONS IN THE FIELD

“The Magellan GPS 315 offers the solid durability needed to keep operating in this job.” Greg Witt -

Assistant Director, Kentucky Transportation Cabinet Division of Planning

Per the Kentucky Transportation Cabinet, GPS units were provided to all law enforcement officers in Kentucky, state and local, who work crashes. The paper forms that the officers fill out include a place for the GPS crash site coordinates and electronic forms also incorporate this data. In addition, the coordinates of all crashes are entered into the state’s CRASH database to be used by a number of state and local agencies in applications such as electronic mapping or GIS.

In field tests, the Kentucky Transportation Cabinet found that the GPS 315 provided the required positional accuracy. “The high accuracy of the GPS 315 enables us to appropriately assign crash locations to the correct road network segments,” Witt explained. “Otherwise, this can be challenging where roads are in close proximity to each other, such as near intersections or in urban settings.”

Witt also commented on how the GPS 315 met Kentucky’s durability needs. “While law enforcement officers are working crashes, the GPS units are subjected to harsh environmental conditions such as extreme cold and heat, and various forms of precipitation. In addition, if accidentally dropped, the GPS unit will likely fall on pavement. The Magellan GPS 315 offers the solid durability needed to keep operating in this job.”

KENTUCKY RELIES ON MAGELLAN EASE OF USE AND TECH SUPPORT

Ease of use and quick training were essential for the Kentucky Transportation Cabinet. “For the majority of users, GPS was a new experience,” Witt noted. “We chose the GPS 315 because it could be set up easily during a training session and be used intuitively to obtain points by someone who has little experience with electronic devices and no practical knowledge of GPS.”

“The training was conducted in a half-day session,” he continued, “so officers across the state could attend with a minimum time away from their duties. The default display of the GPS 315 provides us with an important advantage because it was easily incorporated into our existing CRASH report, eliminating the need for additional user coordination. We were able to reduce the instructions down to one pocket-sized laminated leaflet, enabling the officers to start using the GPS 315 units, without further assistance, immediately after the brief training session.”

Witt made a couple inquiries to Thales Navigation while assembling the instruction pamphlet and preparing the training session. “Knowledgeable staff responded quickly and thoroughly to detailed technical questions about the specific unit, as well as GPS technology in general,” he noted.

The Kentucky Transportation Cabinet needed a reliable, durable and affordable product supported by a committed GPS provider with a dedicated support staff that they could depend on. The clear choice was Magellan GPS 315 from Thales Navigation.

Thales Navigation, Inc.

Corporate Headquarters, Santa Clara, CA, USA

+1 408 615 5100 • Fax +1 408 615 5200

Toll Free (Sales in USA/Canada) 1 800 922 2401

Email professionalsales@thalesnavigation.com

In South America +56 2 234 56 43 • Fax +56 2 234 56 47

In China +86 10 6566 9866 • Fax +86 10 6566 0246

European Headquarters, Carquefou, France

+33 2 28 09 38 00 • Fax +33 2 28 09 39 39

Email professionalsalesemea@thalesnavigation.com

In Germany +49 81 6564 7930 • Fax +49 81 6564 7950

In Russia +7 095 956 5400 • Fax +7 095 956 5360

In UK +44 (0) 870 601 0000 • Fax +44 (0) 208 391 1672

In the Netherlands +31 78 61 57 988 • Fax +31 78 61 52 027

Website www.thalesnavigation.com